

HIGH PSI PLUMBING FITTINGS

High Pressure Steel Fittings for Discharge Side of Pumps



5502-06-06

HP STREET ELBOWS 90°

| PART # | MPT X FPT | WT | PRICE |
|------------|-------------|-----|-------|
| 5502-04-04 | 1/4" x 1/4" | .15 | ---- |
| 5502-06-06 | 3/8" x 3/8" | .22 | ---- |
| 5502-08-08 | 1/2" x 1/2" | .38 | ---- |



5404-08-06

HP REDUCING HEX NIPPLES

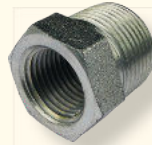
| PART # | MPT X MPT | WT | PRICE |
|------------|-------------|-----|-------|
| 5404-06-04 | 3/8" x 1/4" | .09 | ---- |
| 5404-08-04 | 1/2" x 1/4" | .13 | ---- |
| 5404-08-06 | 1/2" x 3/8" | .16 | ---- |



5504-06-06

HP FEMALE ELBOWS 90°

| PART # | FPT X FPT | WT | PRICE |
|------------|-------------|-----|-------|
| 5504-06-06 | 3/8" x 3/8" | .22 | ---- |
| 5504-08-06 | 1/2" x 3/8" | .44 | ---- |



5406-08-06

HP HEX BUSHINGS

| PART # | MPT X FPT | WT | PRICE |
|------------|-------------|-----|-------|
| 5406-06-04 | 3/8" x 1/4" | .06 | ---- |
| 5406-08-04 | 1/2" x 1/4" | .11 | ---- |
| 5406-08-06 | 1/2" x 3/8" | .06 | ---- |
| 5406-12-08 | 3/4" x 1/2" | .16 | ---- |



5500-06-06

HP MALE ELBOW 90°

| PART # | MPT X MPT | WT | PRICE |
|------------|-------------|-----|-------|
| 5500-06-06 | 3/8" x 3/8" | .18 | ---- |



5000-06-06

HP COUPLINGS

| PART # | FPT X FPT | WT | PRICE |
|------------|-------------|-----|-------|
| 5000-04-04 | 1/4" x 1/4" | .09 | ---- |
| 5000-06-06 | 3/8" x 3/8" | .10 | ---- |
| 5000-08-08 | 1/2" x 1/2" | .24 | ---- |



5404-06-06

HP HEX NIPPLES

| PART # | MPT X MPT | WT | PRICE |
|------------|-------------|-----|-------|
| 5404-04-04 | 1/4" x 1/4" | .07 | ---- |
| 5404-06-06 | 3/8" x 3/8" | .09 | ---- |
| 5404-08-08 | 1/2" x 1/2" | .15 | ---- |



5500-06-04

HP MALE REDUCING ELBOW 90°

| PART # | MPT X MPT | WT | PRICE |
|------------|-------------|-----|-------|
| 5500-06-04 | 3/8" x 1/4" | .19 | ---- |



5404N-04x2.5

HP 2.5" LONG NIPPLE

| PART # | MPT X MPT | WT | PRICE |
|--------------|-------------|-----|-------|
| 5404N-04x2.5 | 1/4" x 1/4" | .12 | ---- |



5501-06-06

HP MALE ELBOW 45°

| PART # | MPT X MPT | WT | PRICE |
|------------|-------------|-----|-------|
| 5501-06-06 | 3/8" x 3/8" | .14 | ---- |



5605-06-06-06

HP FEMALE TEES

| PART # | FPT X FPT X FPT | WT | PRICE |
|---------------|--------------------|-----|-------|
| 5605-06-06-06 | 3/8" x 3/8" x 3/8" | .22 | ---- |
| 5605-08-08-08 | 1/2" x 1/2" x 1/2" | .45 | ---- |



5503-06-06

HP STREET ELBOW 45°

| PART # | FPT X MPT | WT | PRICE |
|------------|-------------|-----|-------|
| 5503-06-06 | 3/8" x 3/8" | .17 | ---- |



5652-06-06-06-06

HP FEMALE CROSSES

| PART # | FPT X FPT X FPT X FPT | WT | PRICE |
|------------------|---------------------------|-----|-------|
| 5652-06-06-06-06 | 3/8" x 3/8" x 3/8" x 3/8" | .31 | ---- |
| 5652-08-08-08-08 | 1/2" x 1/2" x 1/2" x 1/2" | .55 | ---- |



MB-3838S



HHA10

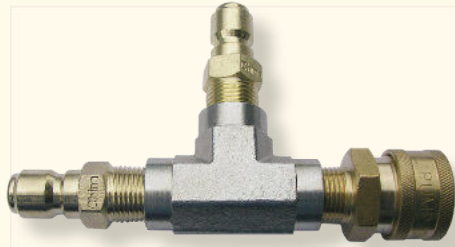
MANIFOLD BLOCKS

| PART # | FPT X FPT | WT | PRICE |
|----------|---------------------|-----|-------|
| MB-3838S | 3/8" x 3/8" | .50 | ---- |
| MB-5050 | 1/2" x 1/2" | .60 | ---- |
| HHA10 | (3) 1/2" x (2) 3/8" | 1.7 | ---- |

HTCP

DON'T SEE THE EXACT PLUMBING FITTING THAT YOU NEED, CALL US TODAY.
(504) 888-8989 or Toll Free 800-992-7448

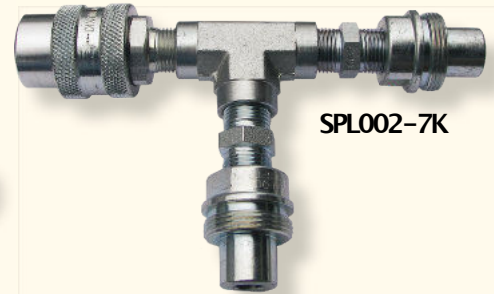
HIGH PSI SPLITTERS & FILTERS



SPL001



SPL003

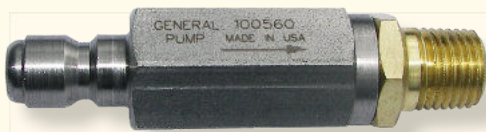


SPL002-7K

SPLITTERS

| PART # | DESCRIPTION | GPM | PSI | INLET | OUTLET | WT | PRICE |
|-----------|-------------------------------|-----|------|--------------|------------------|------|-------|
| SPL001 | Splitter, 2-Gun | 8 | 4200 | 3/8" QCS | 3/8" QCP (2) | .68 | ---- |
| SPL002 | Splitter, 2-Gunw/SS QC's | 8 | 6000 | 3/8" SS QCS | 3/8" SS QCP (2) | .63 | ---- |
| SPL002-7K | Splitter, 2-Gunw/STL 10K QC's | 8 | 7350 | 3/8" STL QCS | 3/8" STL QCP (2) | 1.3 | ---- |
| SPL003 | Splitter, 3-Gun | 8 | 4200 | 3/8" QCS | 3/8" QCP (3) | .85 | ---- |
| SPL003-7K | Splitter, 3-Gunw/STL 10K QC's | 8 | 7350 | 3/8" STL QCS | 3/8" STL QCP (3) | 2.12 | ---- |
| SPL004 | Splitter, 2-Gunw/1/2" QC's | 12 | 4200 | 1/2" QCS | 1/2" QCP (2) | .90 | ---- |
| SPL005 | Splitter, 2-Gun, 1/2" x 3/8" | 12 | 4200 | 1/2" QCS | 3/8" QCP (2) | .81 | ---- |

NOTE: SS =Stainless Steel /STL =10K Steel /QCS =Quick Connect Socket /QCP =Quick Connect Plug



100560



100647



100670

HIGH PRESSURE INLINE FILTERS

| PART # | DESCRIPTION | GPM | PSI | INLET | OUTLET | WT | PRICE |
|---------|---|------|------|------------|------------|-----|-------|
| 100647 | Filter, 100Mesh Inline High Pressure, Brass | 8 | 5000 | 1/4" NPT-F | 1/4" NPT-M | .30 | ---- |
| V100560 | Filter, 100Mesh Inline High Pressure, SS | 10.5 | 5075 | 1/4" QCP | 1/4" NPT-M | .40 | ---- |
| 100560 | Filter, 100Mesh Inline High Pressure, SS | 8 | 5500 | 1/4" QCP | 1/4" NPT-M | .23 | ---- |
| 100670 | Repair Kit, Fits 100560 & 100647 | | | | | .03 | ---- |

NOTE: SS =Stainless Steel /QCP =Quick Connect Plug

Don't see the exact Splitter or Inline Filter you need?

Call us today.

We can have it drop shipped for the RIGHT price!