

FLOAT VALVES / TANK FITTINGS



YFLOATANK

FLOAT TANK ASSEMBLY

PART #	DESCRIPTION	GPM	PSI	INLET	WT	PRICE
YFLOATANK	Float Tank, 1.05 Gallon	7.0	140	3/8" BSP-M	1.85	----

NOTE: 11.0" L x 5.0" W x 8.5" H, Plastic Includes Lid, YFLOATVALVE Assembly, Tank Screen Outlet Fitting, & Overflow Barb Fitting; 140° F Max Temp



2X525-5

FLOAT VALVES

PART #	DESCRIPTION	GPM	PSI	INLET	WT	PRICE
--------	-------------	-----	-----	-------	----	-------

Bronze Float Valves

6AMA1	Bronze Float Valve, 10" Brass Arm	20	125	1/2" NPT-M	.69	----
2X525-5	Bronze Float Valve, 10" Brass Arm	40	100	3/4" NPT-M	.90	----
PF45	Plastic Float Ball, 4" Diam. x 5" L	N/A/N/A		1/4"-20 FPT	.15	----

Brass Float Valve Assemblies



YFLOATVALVE

HTCP YFLOATVALVE	Brass Float Valve w/Gray Float	7	145	3/8" BSP-M	.65	----
YRG60FV	Brass Float Valve w/Black Float	7	145	1/2" BSP-M	.80	----
200008520	ST-8 Brass & Plastic, Brass Arm	5	140	1/2" NPT-F	.44	----
22.0018	Brass Float Valve w/Float		105	1/2" NPT-M	.75	----



4YM37

LIQUID LEVEL SWITCH

PART #	DESCRIPTION	PSI	WT	PRICE
4YM37	Liquid Level Switch, Horizontal	100	.10	----

NOTE: Switch, Magnetically Actuated Dry Reed, Fitting 5/8-11 UNC, VARating 30, Operation NO/NC, Stem Material Polypropylene, Float Material Polypropylene, Horizontal



HV-1

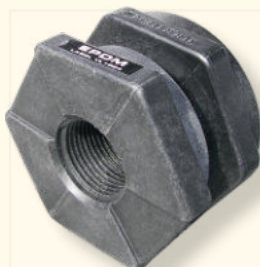
HUDSON VALVE

PART #	DESCRIPTION	INLET	WT	PRICE
HV-S 1/2	Hudson Shutoff Valve	1/2" NPT-F	.55	----
HV-1	Hudson Shutoff Valve	1" NPT-F	.64	----

NOTE: The unique patented design of the Hudson Valve uses fluid pressure, as opposed to a lever arm and ball, as the force to close the valve. When properly installed, the valve will meet anti-siphon requirements. Flow rate is approximately 80% of flow supplied to valve.

HEIGHT: 5.0" / DIAMETER: HV-S1/2=3.0" / HV-1=3.75" / MAX FLUID TEMP: 90° F /

OPERATING PRESSURE: HV-S1/2=8 PSI -100 PSI / HV-1=8 PSI -65 PSI w/a minimum 8 GPM flow rate



TF-075



TF-100

TANK BULKHEAD FITTINGS

PART #	FPT	WT	PRICE
TF-050	1/2"	.25	----
TF-075	3/4"	.23	----
TF-100	1"	.34	----
TF-125	1-1/4"	.35	----
TF-150	1-1/2"	.69	----